

## Features

- 100% recyclable
- Protects products
- Light weight
- Decreases transportation & disposal costs (cost effective)
- Reduces injuries
- Easy to handle

## Design

- Prevents the adherence to ice
- Solid body, one-piece construction
- Anti-slip surface
- 4 way forklift and pallet jack entry (US and EU)
- Reinforced, perforated deck
- Resistant to most chemicals
- Meets GMA standards

## Options

- Custom colors (virgin only)
- Molded-in logo or custom identification
- Bar coding
- Rubber anti-slip

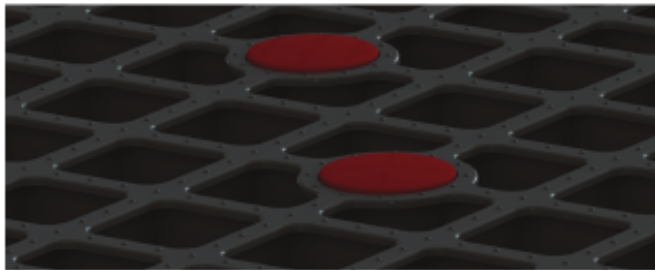
## Loading Information

40 FT. HC container	-	1134 Pieces
40 FT. container	-	966 Pieces
20 FT. container	-	460 Pieces

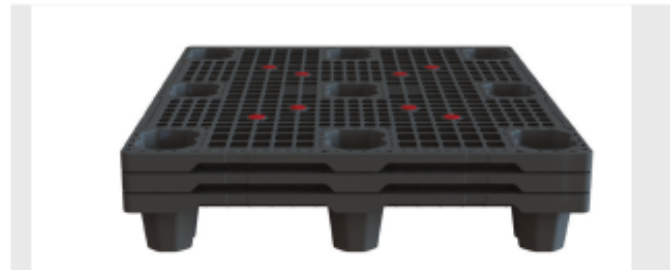
# Specifications

Dimensions (L / W / H)	1200 / 1000 / 152 mm	48 / 40 / 6 in
Weight	8.2 KG	18.07 LB
Maximum load Dynamic	1,350 KG	3,000 LB
Maximum load Static	3,000 KG	6,600 LB
Material	PP/HDPE recycled or virgin	
Ignition point Temperature	-18°C to +78°C	0°F to +172°F
		>350°C

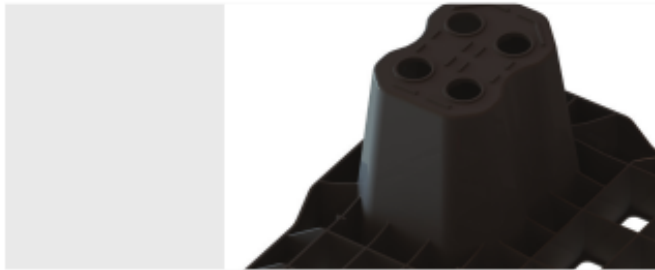
# More details



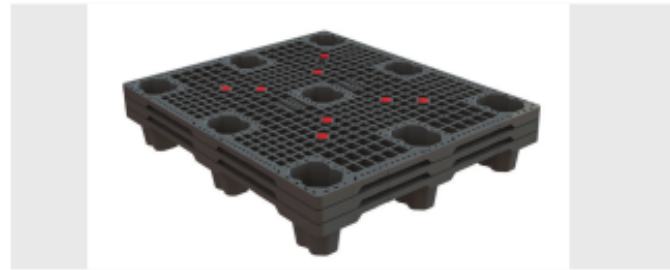
Dots and rubber (optional) anti-slip



Easy forklift enter when nested



Strong legged structure



Space saving

# Technical Drawing

